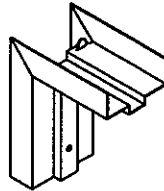
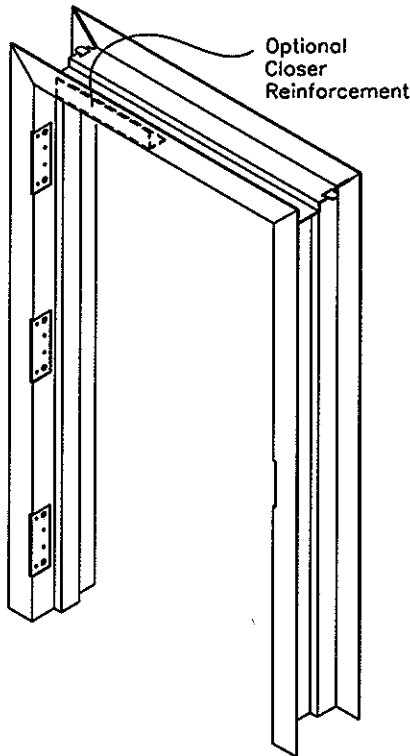


General notes:

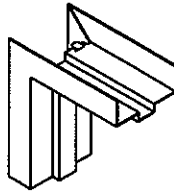
Series LR 18-16 and 14

Frames shall be fabricated from 18,16 or 14gage, zinc-iron coated carbon steel sheets of commercial quality, mill phosphate hot-dipped galvannnealed conforming to ASTM A-653 with ZF120 (A40) designation or ZF180 (A60) designation. Knocked down drywall frames to be assembled by the installation contractor. Welded frames die-mitered and face-welded or saw-mitered and continuously welded. Welds are ground and finished smooth.

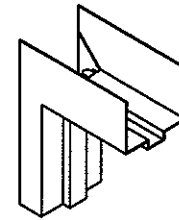
ASSEMBLY TYPES



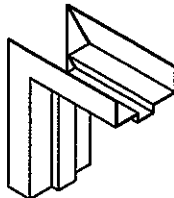
Knocked Down (KD)



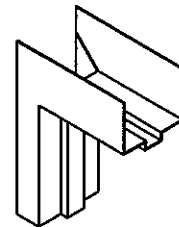
Face Welded Only (FWO)



**Face Welded Only (FWO)
4" head**



Continuous Fully Welded (CFW)

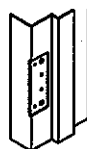


**Continuous Fully Welded (CFW)
4" head**

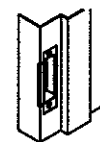
NOTE:

1. All listed frames have anchors welded in place.
2. For 2" face KD frames, the rough opening should be equal to:
 - finished opening height plus 1 1/4"
 - finish opening width plus 2".
3. For cased open KD frames, the rough opening should be equal to:
 - height plus 1 1/4".
 - width plus 2 3/4".

HINGE AND STRIKE

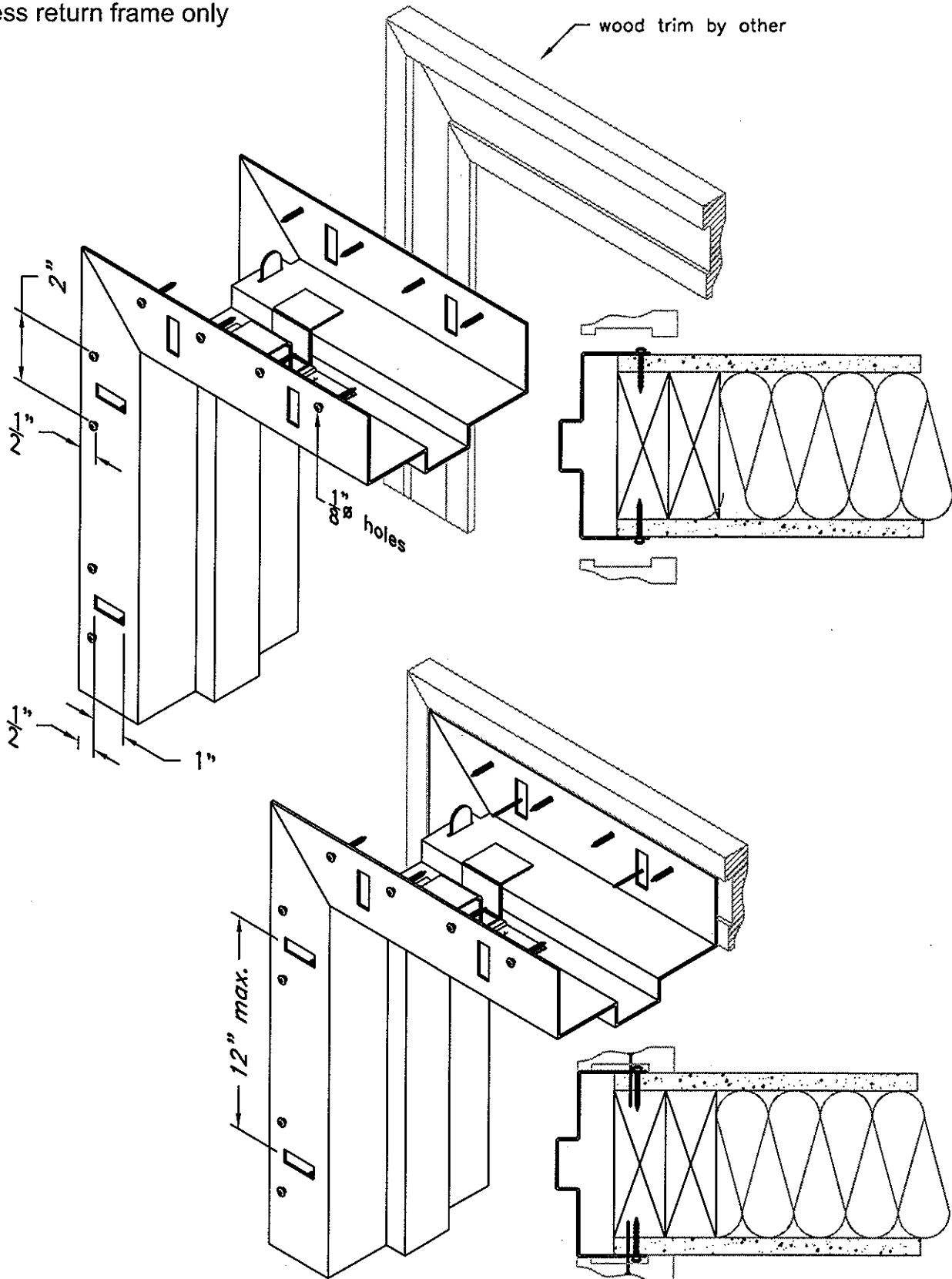


Standard 10gage hinge reinforcement



Ansi 4 7/8 strike reinforcement

WTP, Wood Trim Anchor
Less return frame only



For knocked down frames, same rough opening as for a drywall frame.